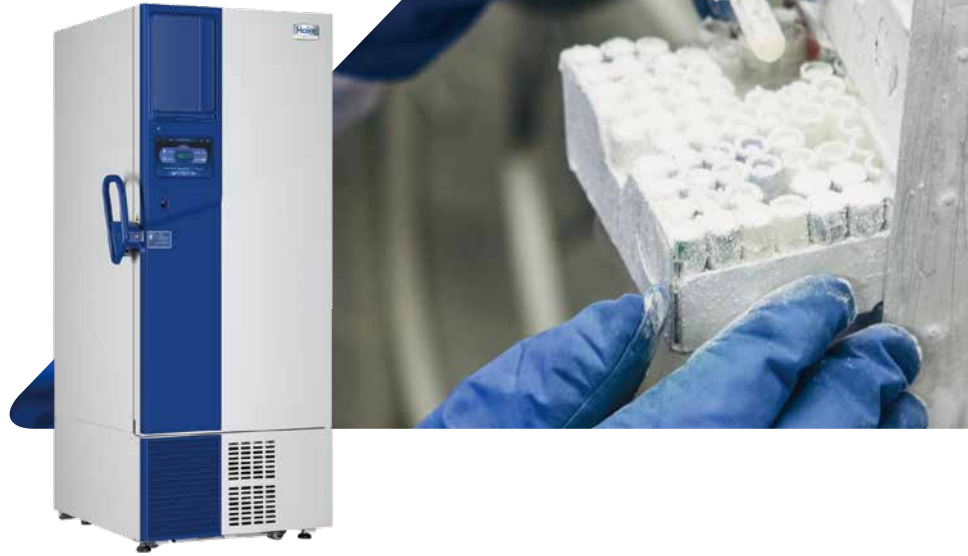


-86°C ULT Freezer DW-86L578ST



GENERAL

Storage Capacity(L/Cu.Ft)		578/20.4
Temperature Range(°C)		-40 ~ -86
Noise (dB(A))		52
Net/Gross Weight (kg)		325/355
Exterior Dimension (W×D×H)	mm	895*998*1980
	in	35.4*39.3*78.0
Interior Dimension (W×D×H)	mm	620*716*1310
	in	24.4*28.2*51.6

ENVIRONMENTAL & ELECTRICAL DATA

Electrical Power (V/HZ)		120/60
Power(W)		1400
Power Consumption(kW-hr/day)		10
Electrical Current (A)		14
Building Supply Rating (A)		20
Power Lead Length (m)		2.5
Heat Rejection (BTU/day)		34120
Ambient Temperature(°C)		10 - 32

REFRIGERATION CONFIGURATION

Refrigeration System Type		HC
Compressor Type/Brand/Number		Hermetic Reciprocating Type/SECOP/2
Compressor Capacity (W)		950+950
Evaporator Type		Copper Tube Evaporator
Defrost Method		Manual
Refrigerant Charge/Flammable		R600a+R1150+R14 Mix in 1st Stage / the same in 2nd Stage/Flammable

CONTROLLER/ELECTRICAL SYSTEM FEATURES

Controller Level	Top
Power Switch	20A
Controller Type	Microprocessor,touch screen
Setpoint Security	Yes
Controller Sensor	PT100
Remote Alarm Terminals	Remote Alarm Port, RS485
Adjustable High/Low Temp Alarms	Y
Auto Voltage Safeguard	Y

CONSTRUCTION

Insulation	VIP+CFC Free Foaming Agent
Exterior Door Seal	Four Seal On the Outside Door Seal Strip
Interior Door Seal	One Seal On the Interior Door Seal Strip
Shelves/Capacity/Dims/Material	3 stainless steel adjustable shelves with dimension 596*657 mm(W*D), max capacity per shelf:80kg, 176.5 lbs
Casters	Y/4
Exterior Material	Color Coating Steel Plate
Interior Material	Color Coating Steel Plate
Door Thickness (mm)	90
Cabinet Thickness (mm)	90
Inner Door	Four Solid Door
Condenser Type	Fin condenser
Fan Brand	SUNON
Back Up Battery For Alarm Functions	Support high/low temperature, power failure, door open, sensor failure, high ambient temperature, hot condenser and low battery alarms

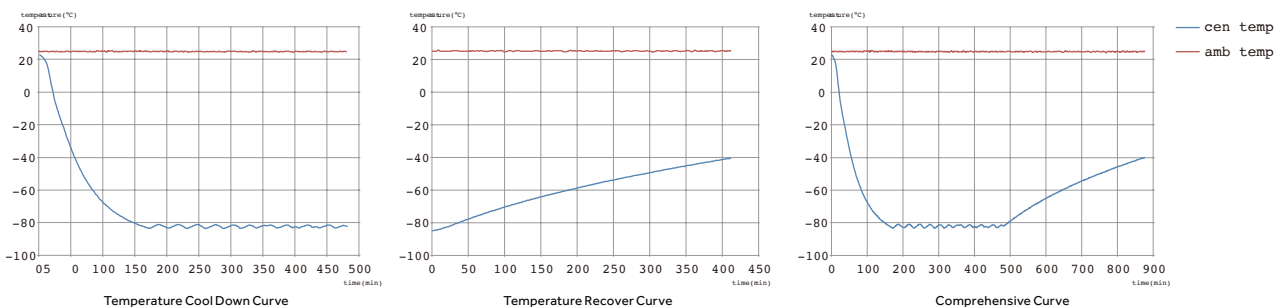
PERFORMANCE

Temperature Uniformity(°C)	±5
Temperature Accuracy(°C)	0.1
Cool Down Time (25°C ambient to -80°C) mins	240
Warm Up Time (25°C ambient -80°C to -50°C) mins	280
1 Min Door Open Recovery Time (ambient 25°C running temp -80°C)mins	30

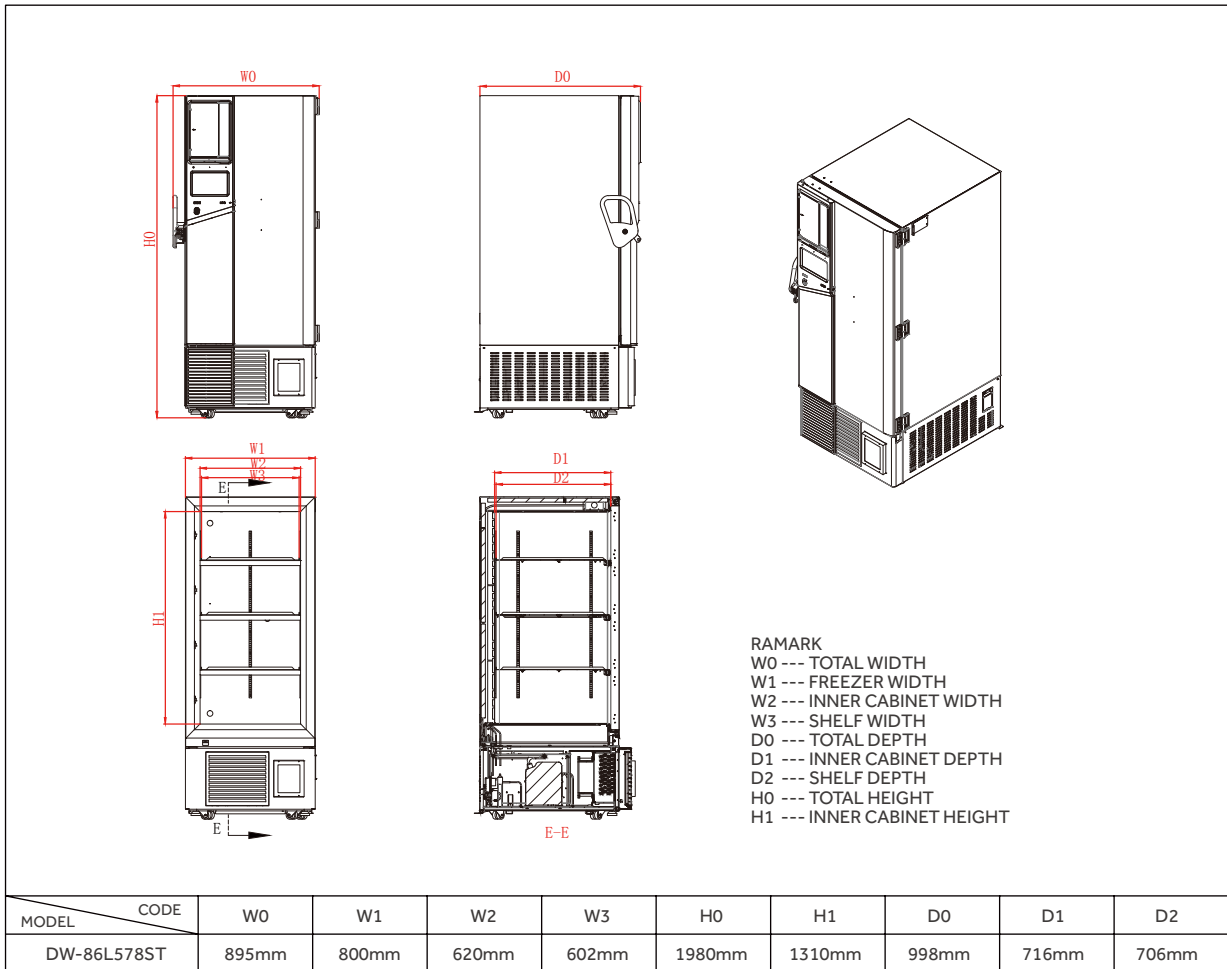
CERTIFICATE

CE

TYPICAL PERFORMANCE CHARACTERISTICS IN 25°C AMBIENT

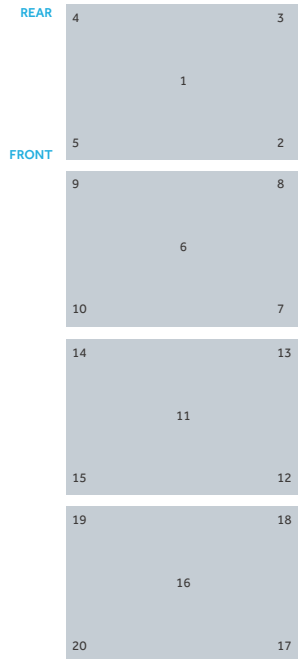


PRODUCT DIMENSION DRAWINGS

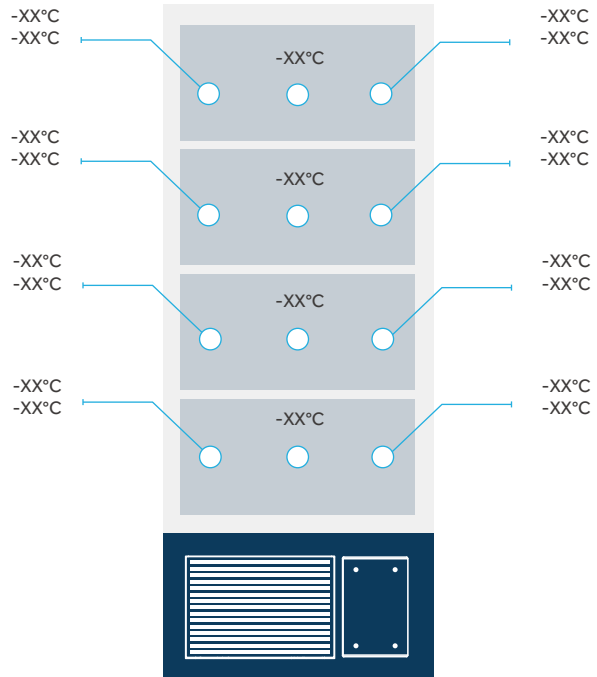


TYPICAL CABINET TEMPERATURE MAP

Top view of shelves



Front view of shelves



°C	1	2	3	4	5	6	7	8	9	10
Max.	-80.2	-79.7	-80.0	-79.7	-80.5	-81.0	-80.6	-81.3	-81.7	-80.9
Min.	-84.1	-83.2	-83.6	-83.5	-84.2	-83.6	-83.1	-84.4	-84.9	-83.8
Avg.	-82.2	-81.5	-81.8	-81.6	-82.4	-82.3	-81.9	-82.9	-83.3	-82.4

°C	11	12	13	14	15	16	17	18	19	20
Max.	-81.1	-80.3	-81.0	-80.2	-80.6	-78.6	-78.8	-78.4	-79.1	-79.4
Min.	-83.2	-82.4	-82.4	-82.6	-83.1	-81.3	-81.5	-81.2	-81.5	-81.9
Avg.	-82.2	-81.4	-82.3	-81.4	-81.8	-80.0	-80.2	-79.8	-80.3	-80.7



Qingdao Haier Biomedical Co.,Ltd.

Address: Brand Building, Haier Industrial Park, No.1
Haier Road, Qingdao, 266101, P.R.China
Tel: +86-0532-88936011 / 5955
Website: www.haiermedical.com

